

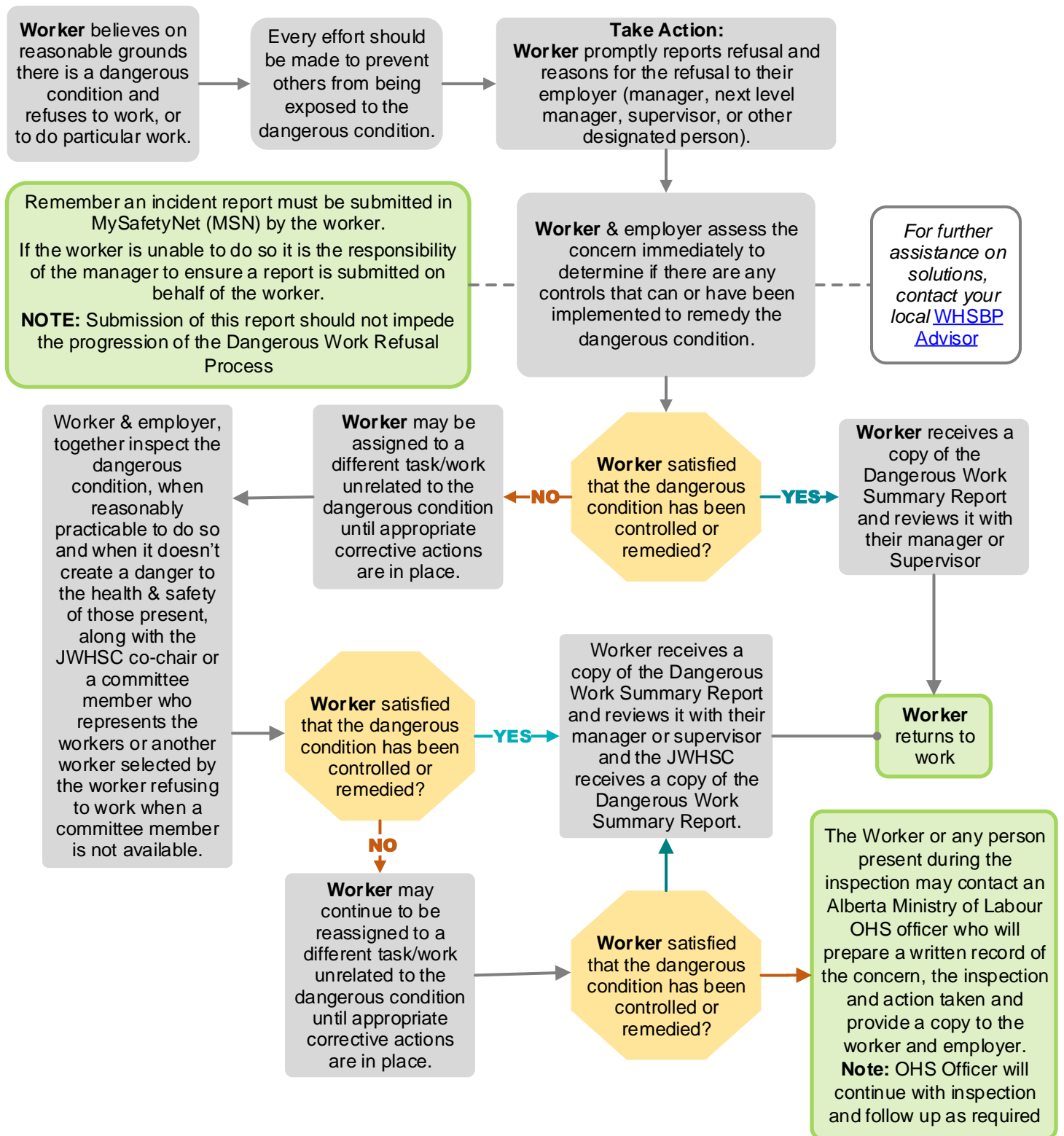
## DANGEROUS WORK REFUSAL FLOWCHART FOR WORKERS

A worker may refuse to work or to do particular work at a work site if the worker believes on reasonable grounds that there is a dangerous condition at the work site or that the work constitutes a danger to the worker's health and safety or to the health and safety of another worker or another person, as outlined in the Alberta OH&S Act.

**Every effort will be made internally to resolve reports of dangerous work as soon as possible.**

**The type of danger that would trigger a refusal may include:**

- Hazards that pose a danger to workers where the hazard has not been assessed and appropriate controls implemented;
- the operation of faulty or broken equipment;
- A situation for which workers are not properly trained, equipped or experienced to work safely (e.g. being asked to complete a task or to operate a piece of equipment without training or without necessary personal protective equipment) or
- Where the hazard control normally in place for a danger is no longer available or adequate.



**Note:** If the worker or any person present during the inspection believes the danger is not remedied following the inspection, they may contact an Alberta Ministry of Labour Occupational Health and Safety (OHS) officer, and/or union representative at any time.